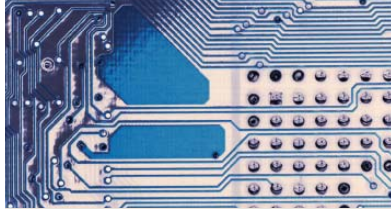




PharmMed

a CareCentric Solution



System Requirements

APPLICATION SERVER

Operating System

- Windows NT Server version 4.0 SP5, Windows 2000, Windows 2003, Windows XP
- PC anywhere Version 11.x Host Only (Windows 2000/2003/XP)

Hardware Requirements

- Processor
 - › Pentium IV 600+ MHz (recommended)
 - › Pentium III 450+ MHz (minimum)
- Memory
 - › 256 Megabytes (recommended)
 - › 128 Megabytes (minimum)
- Hard Disk
 - › 20 Gigabyte (recommended)
 - › 10 Gigabyte (minimum)
- CD-ROM Drive
- Tape Drive
 - › 4mm DAT Tape Drive DDS2/DDS3
 - › 72GB DAT72 Tape Drive DDS5 (required)
- Printers
 - › Label Printer: Dot Matrix Printer 132 Column (minimum),
or Thermal Printer (Intermec Model PF4i or PM4i recommended)
 - › Form Printer: Laser Printer
- Other
 - › 2 External Serial Connections for ECS/Support Modem
 - › 2 US Robotic 56k v.90 /v.92 modems (1 for ECS and 1 for Support)
 - › 2 Telephone Lines

Network

- 10/100 Hub (Intel or 3COM)
- 10/100 Interface Card (Intel or 3COM)
- TCP/IP Protocol



PharmMed® System Requirements

CLIENT WORKSTATIONS

Operating System

- Windows NT Workstation SP5, Windows 2000, Windows 2003, Windows XP

Hardware Requirements

- Processor
 - › Pentium III or IV 400+ MHz (recommended)
 - › Pentium II or III 200+ MHz (minimum)
- Memory
 - › 256 Megabytes (recommended)
 - › 128 Megabytes (minimum)
- Hard Disk
 - › 20 Gigabyte (recommended)
 - › 10 Gigabyte (minimum)
- 10/100 Network Interface Card (Intel or 3COM)